

# 2023 NEW PRODUCT REVEAL



2023

 Spyderco

**REVEAL**

VOLUME  
TWELVE



# WELCOME TO SPYDERCO'S “REVEAL” VOLUME 12!

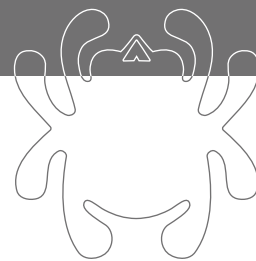
Welcome to Spyderco's “Reveal” Volume 12, our first new-product announcement of 2023. This Reveal proudly announces our newest products and, together with our 2023 Product Guide, presents a complete reference of Spyderco's current line of knives, sharpeners, and accessories.

Leading the pack in this Reveal is the eagerly anticipated Military™ 2, winner of Blade magazine's coveted American-Made Knife of the Year® award at the 2022 Blade Show. A reengineered, second-generation expression of one of our most iconic designs, it updates Sal Glesser's vision of a knife ideally suited to the needs of forward-deployed military personnel—as well as countless others. At the other end of the spectrum, we have two amazingly practical urban fixed blades conceived by first-time knife designer Sjoerd Stok. In between are production models, Sprint Run™ knives, and Mule Team™ blades showcasing elite, high-performance blade steels, including CPM® 15V®, Böhler-Uddeholm's K390 MICROCLEAN®, and AEB-L. There's also an upsized expression of our novel Counter Puppy® kitchen knife and, for fashion-conscious Spyderco enthusiasts, high-quality Orvis® Chambray shirts embroidered with our brand logo.

The items featured in this Reveal reflect the broad scope of Spyderco's brand identity and our open-minded approach to product development. They are also testament to the strength of our global manufacturing partnerships and our longstanding relationships with the world's finest steel makers.

We sincerely hope you find something within these pages that piques your interest and continues to fuel your passion for our products. Thank you for your trust in us and for being part of the Spyderco community.

Respectfully,  
**The Spyderco Crew**



## MILITARY™ 2

### C36GP2

Designed by Spyderco co-founder Sal Glesser as the perfect knife for forward-deployed military personnel, the original Military Model is one of the cutlery industry's most iconic designs. More than 25 years after its original release, the eagerly anticipated Military 2 builds on that hard-earned reputation while incorporating several significant design improvements. Instead of a LinerLock, the Military 2's full-flat-ground CPM® S30V® blade is supported by Spyderco's signature Compression Lock® mechanism, which offers greater strength and even safer one-handed operation. The stainless steel liners that form the foundation of the lock are larger, giving the knife increased structural strength and anchoring its four-position pocket clip, which is configurable for left or right-side, tip-up or tip-down carry. The skeletonized liners are nested within peel-ply-textured G-10 scales to maintain a slim profile and complement its open-backed construction to reduce the knife's overall weight. A proud successor to a legendary design, the Military 2 is ready to serve.



#### [TECH SPECS]

CLOSED:	<b>5.51 in 140 mm</b>
OVERALL:	<b>9.51 in 242 mm</b>
BLADE:	<b>4.00 in 102 mm</b>
EDGE:	<b>3.65 in 93 mm</b>
THICKNESS:	<b>0.145 in 3.7 mm</b>
STEEL:	<b>CPM S30V</b>
WEIGHT:	<b>4.3 oz 122 g</b>
GRIND:	<b>Full-flat</b>
LOCK:	<b>Compression</b>
HANDLE:	<b>G-10</b>
CARRY:	<b>Ambi</b>
CLIP:	<b>4-position</b>
ORIGIN:	<b>USA</b>

#### [EDGE]

C36GP2



## LIL' TEMPERANCE™ 3

### LIGHTWEIGHT K390

**C69**PBL3K390

The Lil' Temperance Lightweight is a powerhouse cutting tool and the latest chapter in a long evolutionary history. Although rooted in Martial Blade Craft design, it provides reliable, full-service performance for any cutting task. To elevate that performance even further, this expression of it features a blade crafted from Böhler-Uddeholm, K390 MICROCLEAN®, a state-of-the-art particle metallurgy tool steel formulated to withstand the rigors of the most demanding industrial applications. Full-flat ground from thick 4mm (0.157-inch) stock, the PlainEdge™ blade of this knife is supported by skeletonized stainless steel liners that form the foundation of its high-strength Compression Lock mechanism. The liners are nested within injection-molded fiberglass-reinforced-nylon (FRN) scales that feature a Bi-Directional Texture™ pattern for a secure, non-slip grip. Molded in the signature blue color of Spyderco's elite family of K390 knives, the scales are also home to a broad-based four-position clip that supports all possible carry preferences.



#### [TECH SPECS]

CLOSED:	4.37 in 111 mm
OVERALL:	7.17 in 182 mm
BLADE:	2.92 in 74 mm
EDGE:	2.82 in 72 mm
THICKNESS:	0.157 in 4.0 mm
STEEL:	K390
WEIGHT:	3.8 oz 108 g
GRIND:	Full-flat
LOCK:	Compression
HANDLE:	FRN
CARRY:	Ambi
CLIP:	4-position
ORIGIN:	Japan

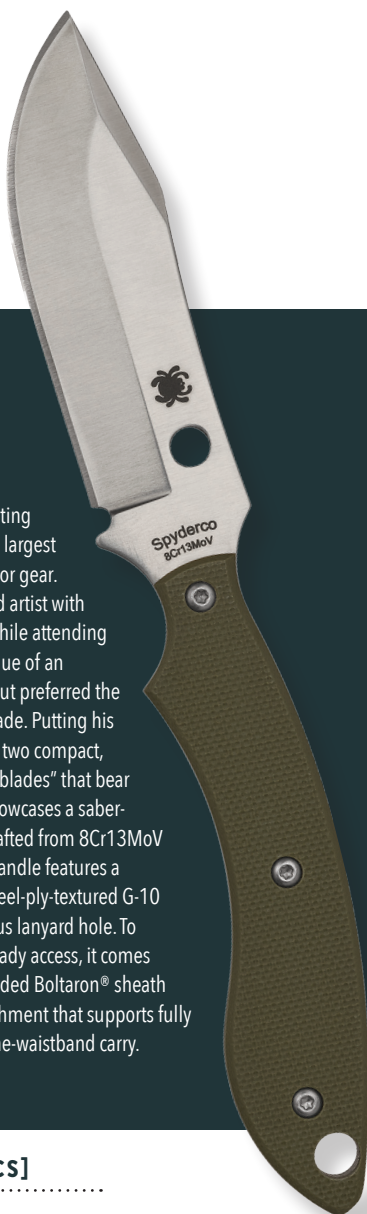
#### [EDGE]

**C69**PBL3K390



## STOK BOWIE FB49<sup>GPOD</sup>

Sjoerd Stok is a Dutch marketing specialist for one of Europe's largest retailers of knives and outdoor gear. He is also a classically trained artist with a deep passion for knives. While attending art school, he learned the value of an everyday carry utility knife, but preferred the simplicity of a small fixed blade. Putting his talents to work, he designed two compact, legally friendly "urban fixed blades" that bear his name. The Stok Bowie showcases a saber-ground Bowie-style blade crafted from 8Cr13MoV stainless steel. Its full-tang handle features a refined ergonomic profile, peel-ply-textured G-10 handle scales, and a generous lanyard hole. To balance discreet carry and ready access, it comes complete with a custom-molded Boltaron® sheath with a G-Clip™ attachment that supports fully adjustable belt and inside-the-waistband carry.



## STOK DROP POINT FB50<sup>GPOD</sup>

Designed by Dutch artist and knife enthusiast Sjoerd Stok, the Stok Drop Point is a compact fixed blade that offers the perfect alternative to a folding knife for urban carry. Measuring only 6.5 inches (164mm) overall, its unique drop-point blade is full-flat ground from 8Cr13MoV stainless steel and features a stylish swedge near the point. Its ergonomic handle design features full-tang construction, peel-ply-textured olive drab G-10 scales, and a large lanyard hole to accommodate lanyards and fobs. To keep it poised for easy access, the Stok Drop Point includes a custom-molded Boltaron sheath with a G-Clip mount that provides angle-adjustable carry on the belt as well as clip-style carry in the waistband.



### [TECH SPECS]

OVERALL:	6.45 in 164 mm
BLADE:	2.95 in 75 mm
EDGE:	2.54 in 65 mm
THICKNESS:	0.100 in 2.5 mm
STEEL:	8Cr13MoV
WEIGHT:	2.1 oz 58 g
SHEATH WT:	1.5 oz 43 g
TOTAL WT:	3.6 oz 101 g
GRIND:	Saber
HANDLE:	G-10
SHEATH:	Boltaron
CLIP:	G-Clip
ORIGIN:	China

### [EDGE]

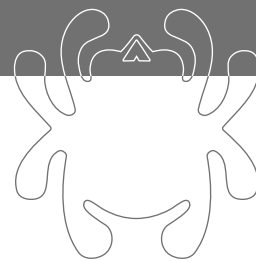
FB49GPOD

### [TECH SPECS]

OVERALL:	6.45 in 164 mm
BLADE:	2.95 in 75 mm
EDGE:	2.57 in 65 mm
THICKNESS:	0.100 in 2.5 mm
STEEL:	8Cr13MoV
WEIGHT:	1.9 oz 53 g
SHEATH WT:	1.5 oz 43 g
TOTAL WT:	3.4 oz 96 g
GRIND:	Full-flat
HANDLE:	G-10
SHEATH:	Boltaron
CLIP:	G-Clip
ORIGIN:	China

### [EDGE]

FB50GPOD



## ENUFF™ 2

K390

**FB31***PBL2K390*

Longer and leaner than its first-generation predecessors, the Enuff 2 sets a new standard in compact fixed-blade performance. This expression of it supercharges the design by rendering it with Böhler-Uddeholm, K390 MICROCLEAN, a state-of-the-art particle metallurgy tool steel. Developed to withstand the rigors of the most demanding industrial applications, K390 offers exceptional sharpness, edge retention, and toughness when used in knife blades. The full-flat-ground PlainEdge blade of the Enuff 2 takes full advantage of these qualities to deliver outstanding cutting performance. Its skeletonized full tang supports tough fiberglass-reinforced nylon (FRN) scales injection molded in the distinctive blue color of Spyderco's K390 family of knives. To ensure ease of carry and immediate access, this Enuff 2 includes an injection-molded polymer sheath that provides both snap-fit retention and a secondary leather retaining strap. The sheath also includes a G-Clip mount for fully configurable belt and inside-the-waistband carry.



### [TECH SPECS]

OVERALL:	<b>7.98 in 203 mm</b>
BLADE:	<b>3.95 in 100 mm</b>
EDGE:	<b>3.72 in 94 mm</b>
THICKNESS:	<b>0.118 in 3.0 mm</b>
STEEL:	<b>K390</b>
WEIGHT:	<b>3.3 oz 94 g</b>
SHEATH WT:	<b>2.7 oz 77 g</b>
TOTAL WT:	<b>6.0 oz 170 g</b>
GRIND:	<b>Full-flat</b>
HANDLE:	<b>FRN</b>
SHEATH:	<b>Polymer</b>
CLIP:	<b>G-Clip</b>
ORIGIN:	<b>Japan</b>

### [EDGE]

**FB31***PBL2K390*





## SHAMAN™

BROWN G-10 CPM® 15V®  
SPRINT RUN™

**C229**GPBN15V

This limited-edition Sprint Run expression of the Shaman showcases a blade crafted from Crucible® Industries' state-of-the-art CPM 15V particle metallurgy tool steel. With almost 15 percent vanadium in its alloy mix, this remarkable material offers the highest wear resistance of any cold-work tool steel currently available. To maximize its potential, the full-flat-ground, stonewashed blade of this knife is further enhanced by a specialized heat-treating protocol developed by acclaimed custom knifemaker Shawn Houston. In keeping with the signature theme of our CPM 15V Sprint Runs, the handle of this Shaman features distinctive brown G-10 scales and the reverse side of the blade is proudly laser engraved with Shawn Houston's "Big Brown Bear" logo. All other elements of this elite knife are consistent with the proven Shaman platform, including nested, skeletonized stainless steel liners, a high-strength Compression Lock® mechanism, and a four-position pocket clip that supports all possible carry positions.



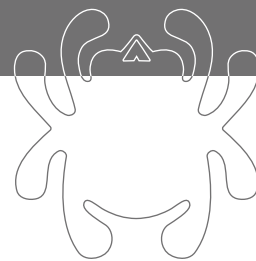
### [TECH SPECS]



CLOSED:	<b>4.67 in 119 mm</b>
OVERALL:	<b>8.25 in 210 mm</b>
BLADE:	<b>3.58 in 91 mm</b>
EDGE:	<b>3.10 in 79 mm</b>
THICKNESS:	<b>0.145 in 3.7 mm</b>
STEEL:	<b>CPM 15V</b>
WEIGHT:	<b>5.1 oz 145 g</b>
GRIND:	<b>Full-flat</b>
LOCK:	<b>Compression</b>
HANDLE:	<b>G-10</b>
CARRY:	<b>Ambi</b>
CLIP:	<b>4-position</b>
ORIGIN:	<b>USA</b>

### [EDGE]

**C229GPBN15V**



## PARA MILITARY™ 2

BROWN G-10 CPM 15V  
SPRINT RUN

### C81GPBN15V2

This elite expression of the Para Military 2 proudly joins the ranks of Spyderco's elite Sprint Run series showcasing CPM 15V steel. Created by Crucible Industries, CPM 15V is a state-of-the-art particle metallurgy tool steel with an extremely high vanadium content. Its unique alloy composition offers superior wear resistance, a quality that translates to extreme sharpness and edge retention in knife blades. The full-flat-ground, stonewashed blade of this knife maximizes these properties with a specialized heat-treating protocol developed by renowned custom knifemaker Shawn Houston. Consistent with the signature theme of this Sprint Run family, the handle of this Para Military 2 features brown peel-ply-textured G-10 scales and the reverse side of the blade is laser engraved with Shawn Houston's "Big Brown Bear" logo.



#### [TECH SPECS]



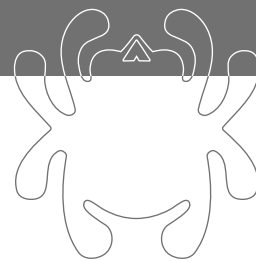
CLOSED:	<b>4.82 in 122 mm</b>
OVERALL:	<b>8.26 in 210 mm</b>
BLADE:	<b>3.45 in 88 mm</b>
EDGE:	<b>3.06 in 78 mm</b>
THICKNESS:	<b>0.145 in 3.7 mm</b>
STEEL:	<b>CPM 15V</b>
WEIGHT:	<b>3.8 oz 108 g</b>
GRIND:	<b>Full-flat</b>
LOCK:	<b>Compression</b>
HANDLE:	<b>G-10</b>
CARRY:	<b>Ambi</b>
CLIP:	<b>4-position</b>
ORIGIN:	<b>USA</b>

#### [EDGE]

C81GPBN15V2







## COUNTER CRITTER™

MEDIUM  
PLAINEGE

### K21

Spyderco's unique Counter Puppy® family added a unique twist to kitchen knife design with injection-molded handles shaped like the stylized body and legs of a puppy. This novel feature allows them to stand upright on a counter or tabletop, keeping them clean and handy while creating a truly distinctive table setting presentation. The new medium-sized Counter Critters expand this family by scaling the concept up by just over 20 percent. Their 7Cr17 stainless steel blades are full-flat ground for outstanding edge geometry and come in a choice of PlainEdge or fully serrated SpyderEdge™ formats. Their high-impact plastic handles are also available in either blue or purple. Take an even bigger stand in your kitchen with upsized Counter Critter.



#### [TECH SPECS]

OVERALL:	<b>8.39 in 213 mm</b>
BLADE:	<b>3.95 in 100 mm</b>
EDGE:	<b>3.75 in 95 mm</b>
THICKNESS:	<b>0.080 in 2.0 mm</b>
STEEL:	<b>7Cr17</b>
WEIGHT:	<b>1.6 oz 45 g</b>
GRIND:	<b>Full-flat</b>
HANDLE:	<b>Plastic</b>
ORIGIN:	<b>China</b>

#### [EDGES]

**K21PBL**

**K21PPR**

# COUNTER CRITTER

MEDIUM  
SPYDEREDGE  
K21



## [TECH SPECS]

OVERALL:	8.39 in 213 mm
BLADE:	3.95 in 100 mm
EDGE:	3.75 in 95 mm
THICKNESS:	0.080 in 2.0 mm
STEEL:	7Cr17
WEIGHT:	1.6 oz 45 g
GRIND:	Full-flat
HANDLE:	Plastic
ORIGIN:	China

## [EDGES]

K21SBL

K21SPR





## MULE TEAM

AEB-L

MT37<sup>P</sup>

Spyderco's Mule Team™ Series is an ongoing project that enables steel-obsessed knife enthusiasts to test different blade materials using the same exact fixed-blade design platform. Sold without handles or sheaths, Mule Team blades are also ideal for aspiring knifemakers and hobbyists. This expression of the Mule Team concept features Uddeholm AEB-L, a blankable stainless steel originally developed in the 1960's for use in razor blades. AEB-L offers a unique combination of high hardness, sharpness, corrosion resistance, and toughness. Although its edge retention is overshadowed by other steels, its superior edge stability makes it ideal for knives with thinner edges and large knives requiring extreme toughness. All Mule Team blades are sold consumer-direct and available only at the Spyderco Factory Outlet or through Spyderco.com.



### [TECH SPECS]

OVERALL:	<b>7.63 in 194 mm</b>
BLADE:	<b>3.50 in 89 mm</b>
EDGE:	<b>3.40 in 86 mm</b>
THICKNESS:	<b>0.118 in 3.0 mm</b>
STEEL:	<b>AEB-L</b>
WEIGHT:	<b>2.7 oz 77 g</b>
GRIND:	<b>Full-flat</b>
ORIGIN:	<b>Italy</b>

### [EDGE]

MT37 P

## MULE TEAM

CPM 15V

MT39<sup>P</sup>

This eagerly anticipated addition to Spyderco's Mule Team Series showcases Crucible Industries' CPM 15V blade steel. Boasting over three percent carbon and almost a 15 percent vanadium, its advanced alloy composition gives it the highest wear resistance of any cold-work tool steel available today. Considered a viable alternative to solid carbide in the production of intricate industrial tool designs, it also makes an extraordinary blade steel. Capable of extreme sharpness and unparalleled edge retention, the CPM 15V in this Mule Team is even better when its performance is optimized by a special heat-treating protocol developed by acclaimed custom knifemaker Shawn Houston. Like all Mule Team blades, this one is sold without a handle or sheath and is only available consumer-direct from the Spyderco Factory Outlet or through Spyderco.com.

### [TECH SPECS]

OVERALL:	<b>7.63 in 194 mm</b>
BLADE:	<b>3.50 in 89 mm</b>
EDGE:	<b>3.40 in 86 mm</b>
THICKNESS:	<b>0.118 in 3.0 mm</b>
STEEL:	<b>CPM 15V</b>
WEIGHT:	<b>2.8 oz 79 g</b>
GRIND:	<b>Full-flat</b>
ORIGIN:	<b>USA</b>

### [EDGE]

MT39P





## ORVIS® TECH CHAMBRAY WORK SHIRT

BLACK LONG-SLEEVE

**WS01**

Made by Orvis, these premium long-sleeve work shirts are a comfortable, stylish way of expressing your Spyderco pride. Featuring a 50/50 blend of polyester and MarinoWul+ recycled polyester, these eco-friendly shirts are incredibly soft, moisture-wicking, breathable, and temperature-regulating. They are also machine washable, wrinkle resistant, and anti-static and are treated with OutSmart® Fresh for odor control. Available in a choice of black or blue, these stylish shirts feature two chest pockets and are proudly embroidered with a circular logo of the Spyderco bug and our "Reliable High Performance™" motto. Sold consumer direct only, these shirts are available from the Spyderco Factory Outlet or through Spyderco.com.

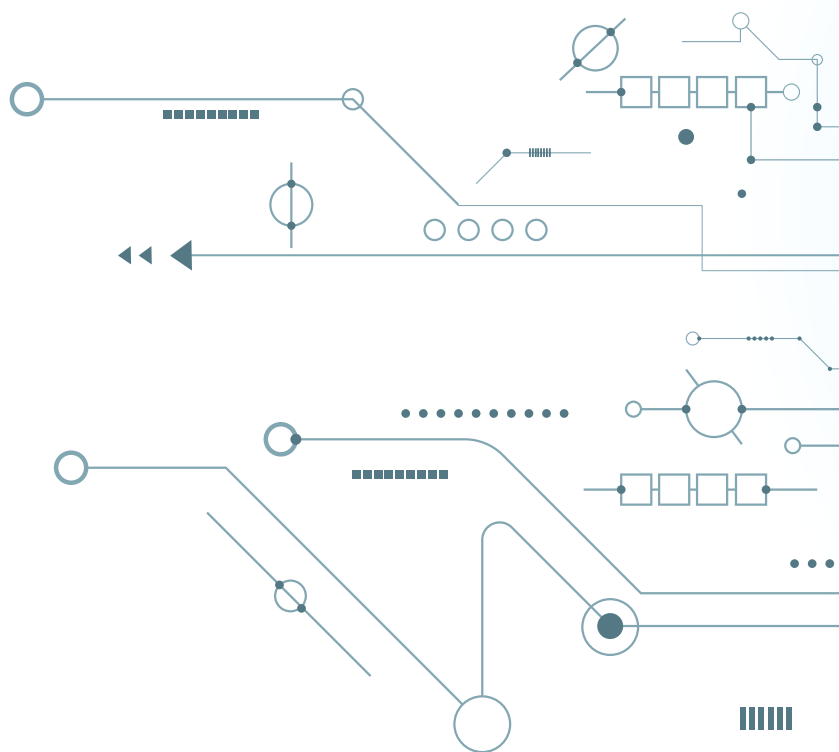
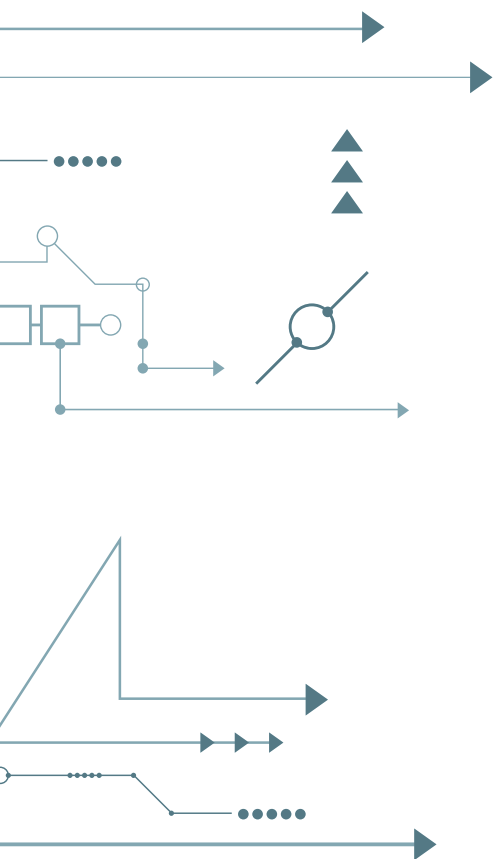


## ORVIS TECH CHAMBRAY WORK SHIRT

BLUE LONG-SLEEVE

**WS02**





Download the Spyderco App



SPYDERCO, INC. • 820 Spyderco Way • Golden, CO 80403 • USA  
Toll Free: 800-525-7770 • Local 303-279-8383 • [www.Spyderco.com](http://www.Spyderco.com)

